



# Project Guide

Understanding the Process Before Your Project Begins

# A DIFFERENT APPROACH



Projects today often involve multiple consultants, designers, and contractors working toward the same goal from different perspectives.

Arbolith helps create alignment between vision, site, budget, and construction from the beginning. The goal is not simply to create drawings or complete construction.

The goal is to create clarity before decisions are made and maintain alignment throughout the process.

# Building Begins Before Construction

---

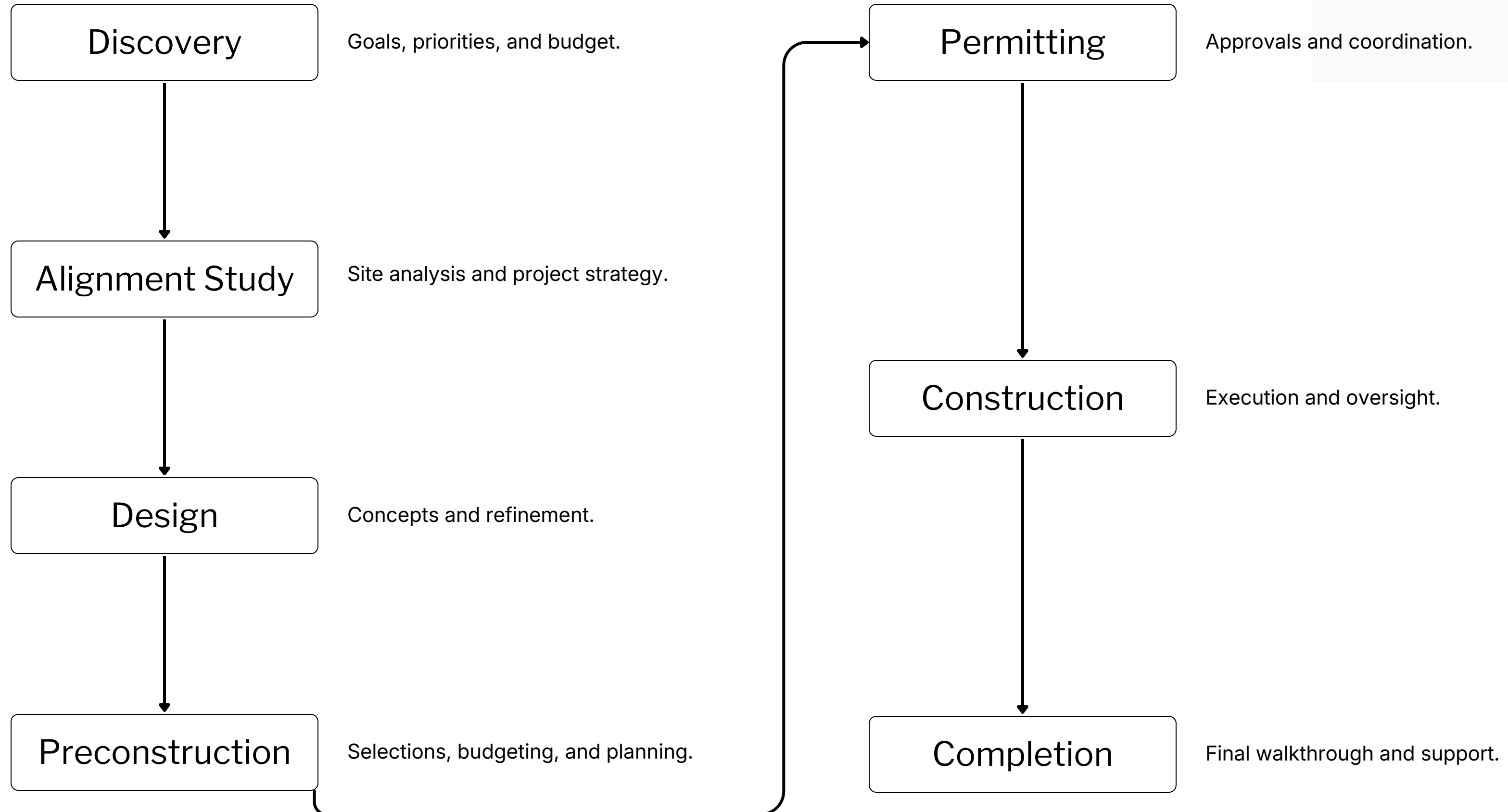
Successful projects are shaped long before work begins onsite.

The early stages of planning create an opportunity to understand the site, establish priorities, evaluate constraints, and align expectations.

This foundation often becomes the difference between a stressful project and a successful one.



# THE PROJECT JOURNEY



# THE ALIGNMENT STUDY

---



Most projects begin with drawings.

We begin with understanding.

The Alignment Study establishes a shared understanding of site conditions, project goals, opportunities, constraints, and budget realities before significant investments are made.

This phase often reduces uncertainty and creates a stronger foundation for the work that follows.



- Site Analysis
  - Topography and Soils
  - Microclimates - Solar & Wind
  - Infrastructure Access
  - Legal & Regulatory Constraints
- Project Goals
- Budget Alignment
- Risk Identification
- Project Strategy

# UNDERSTANDING THE SITE



## QUESTIONS WE HELP CLIENTS EXPLORE

---

- Is this project feasible?
- What budget range is realistic?
- What are the primary opportunities and constraints of the site?
- What approvals may be required?
- What consultants will likely be needed?
- Which decisions will have the greatest impact on cost?
- What should happen first?
- How can we reduce risk before construction begins?
- Is this the right project for this property?
- What is the most practical path forward?



The goal of the Alignment Study is not to provide every answer immediately. Its purpose is to create clarity around the questions that matter most before significant investments are made.

# DESIGN & PRECONSTRUCTION



Good projects emerge through hundreds of decisions made with clarity and intention.

Following the Alignment Study, design and preconstruction transform project goals into a coordinated plan for construction.

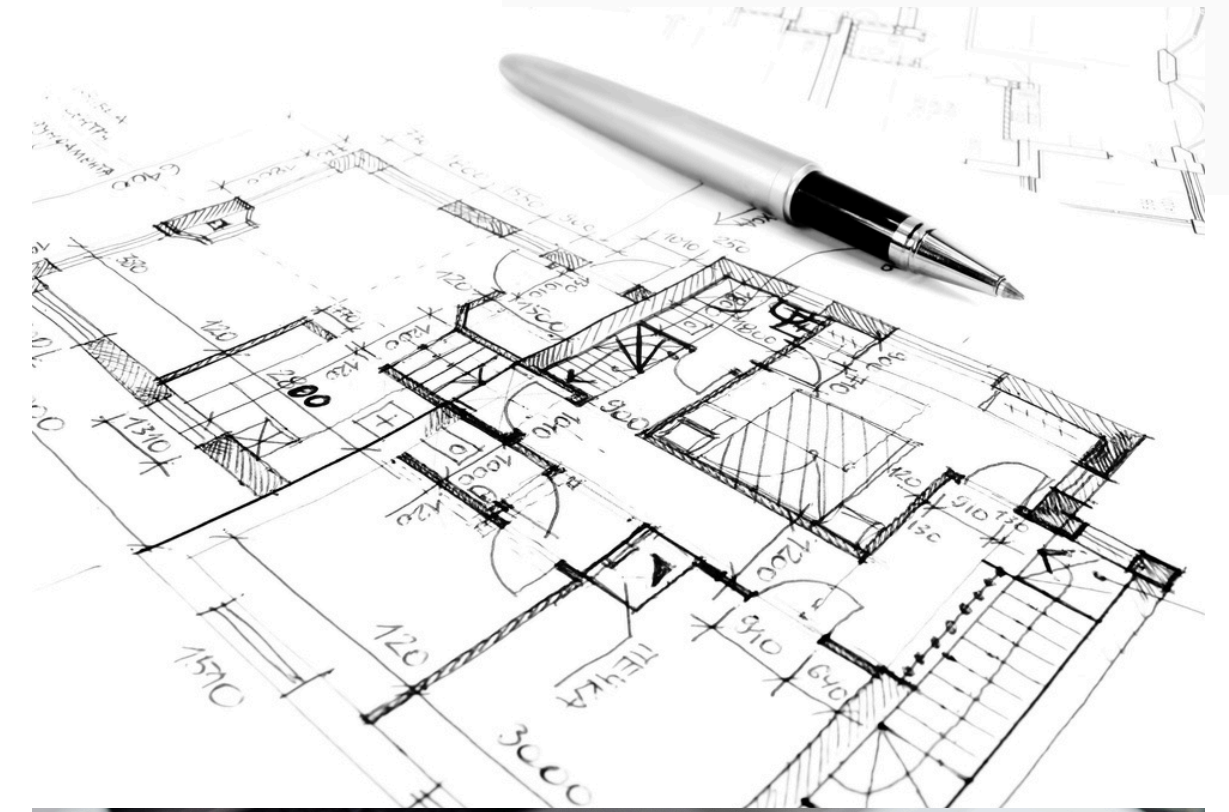
Rather than treating design, budgeting, and construction as separate conversations, these phases work together to align vision, feasibility, and execution.

## Design

- Concept Development
- Space Planning
- Existing Conditions
- Material Exploration
- Consultant Coordination

## Preconstruction

- Budget Refinement
- Permit Coordination
- Scope Development
- Scheduling
- Construction Planning



# FREQUENTLY ASKED QUESTIONS



## Are you an architect?

Arbolith is a builder-led design practice. Depending on project requirements, we collaborate with licensed architects, engineers, and consultants to provide the expertise each project requires.

## Can you work with my architect?

Yes, I often collaborate with architects. I can help bridge the gap between architect and GC.

## Do I need plans before contacting you?

No, I can help you begin the process of aligning your goals and constraints.

## How are projects priced?

I bill hourly for design and consultation work, and use a cost+ method when working as a General Contractor



## ABOUT THE STUDIO

---



Arbolith was created to bridge the gap between design and construction through thoughtful planning, site intelligence, and practical execution.

The name comes from the image of a tree growing from stone.

A symbol of resilience, adaptation, and growth rooted in place.

Like the tree, every project is shaped by the conditions that support it—site, climate, materials, people, and purpose.



# NEXT STEPS

---



1. Discovery Conversation
2. Site Consultation
3. Proposal

If it feels like a good fit, we'll determine together whether an Alignment Study, design services, construction leadership, or a combination of services is appropriate for your project.



Schedule a discovery conversation to discuss your project, goals, and next steps.

Karl Manteuffel

**ADDRESS**

PO Box 3171 Eldorado Spring,  
Co 80025

**EMAIL**

[karl@arbolith.com](mailto:karl@arbolith.com)

**PHONE**

303.847.2830